



EPI & Family Planning Integration in Liberian Health Facilities

May 27, 2013





USAID
FROM THE AMERICAN PEOPLE



Maternal and Child Health
Integrated Program



Context: Quick Facts –Liberia

- **Total fertility rate: 5.2**
- **Contraceptive prevalence:**
 - ▶ 10.3% (modern methods)
 - ▶ 11.4% (all methods)
- **Unmet need for FP: 36%**
- **Immunization Coverage: 51%**
(Source: MOHSW)



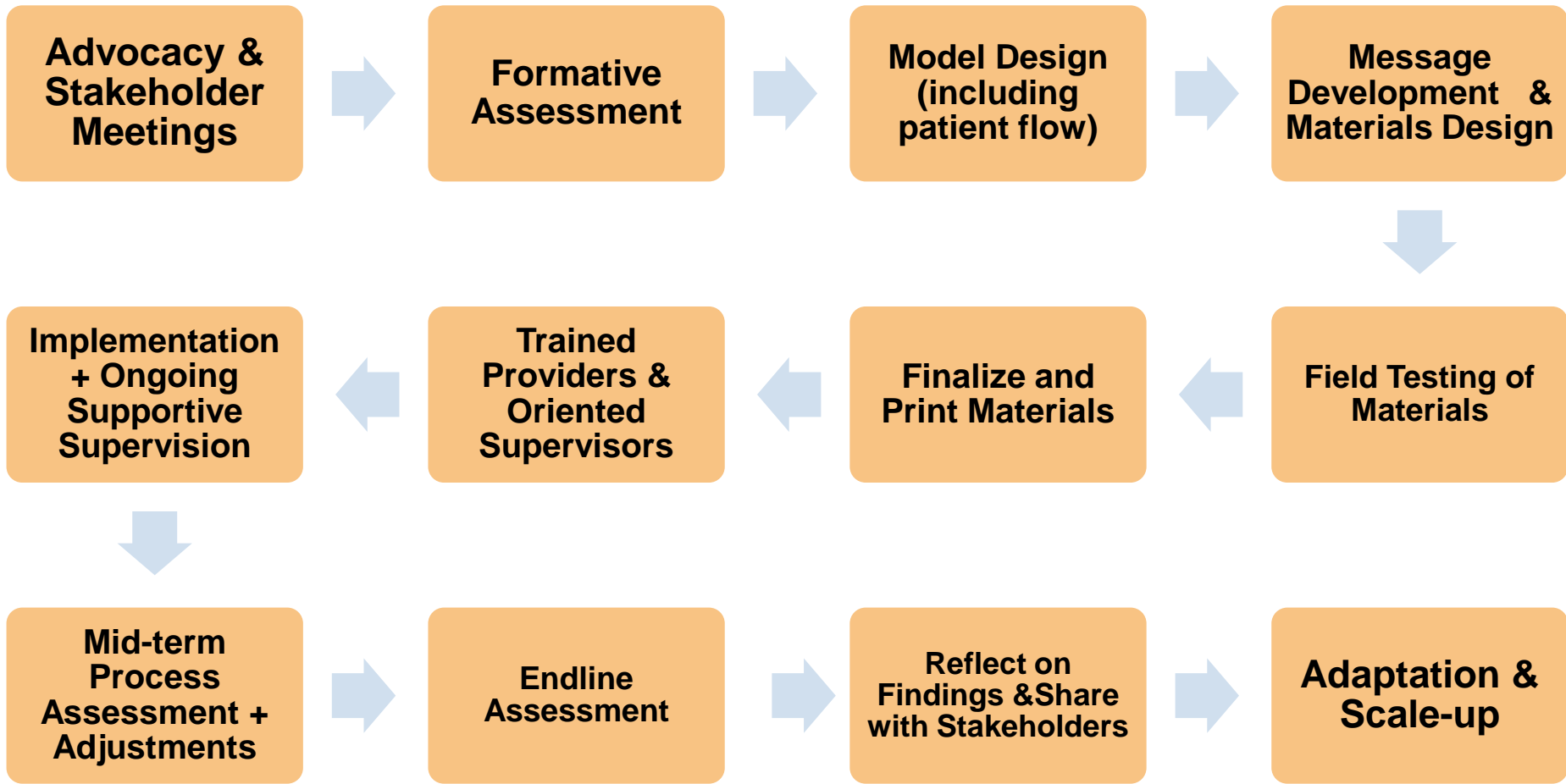


The Integrated Service Delivery Model

- Collaboration between MOHSW & MCHIP
- **Combined Service Provision Model:**
 - Use of routine immunization at fixed facilities
 - Vaccinators provide **one-on-one** immunization and FP messages and referrals for **same-day** FP services
 - Job aid and IEC materials designed strategically to address barriers and enablers identified through formative assessment
- Pilot with scalable model implemented during March-November 2012 at 10 health facilities in Bong & Lofa Counties (in each county one referral hospital and 4 clinics)



Sequence of Activities



Process Findings: March-November 2012*



	Total # of mothers accepting FP referrals	# (%) of mothers accepting FP referrals who went to the FP provider that day	# (%) of mothers accepting FP referrals who went to the FP provider and accept an FP method that day
LOFA COUNTY	426	357 (84%)	332 (93%)
BONG COUNTY	1064	934 (88%)	892 (96%)

*Source: MOHSW/CHT/MCHIP Supervision Visits to Pilot Sites

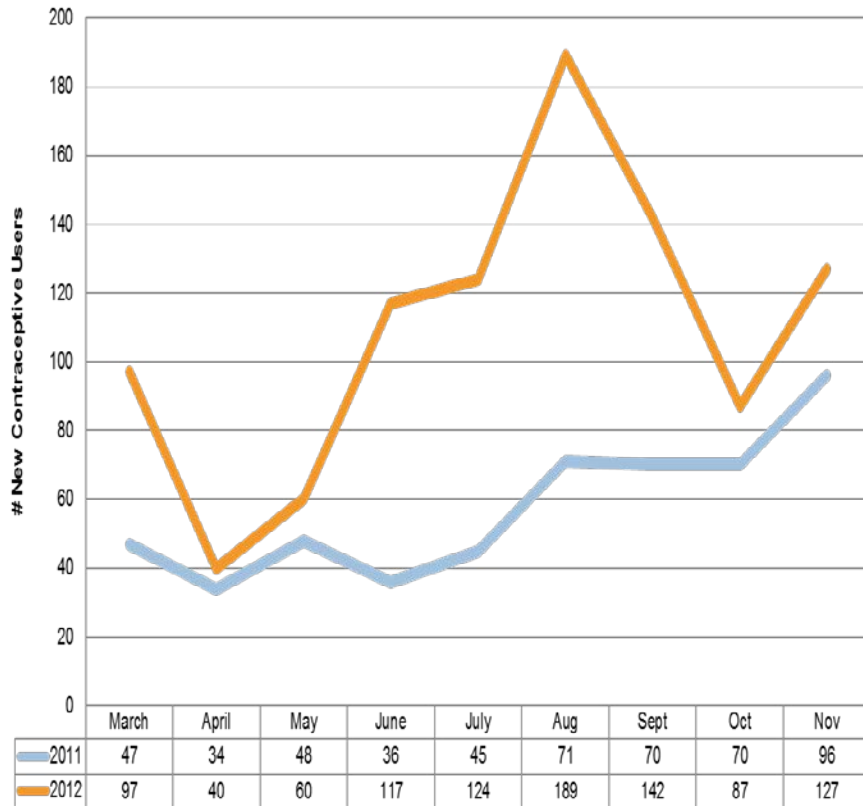


Participating Facilities

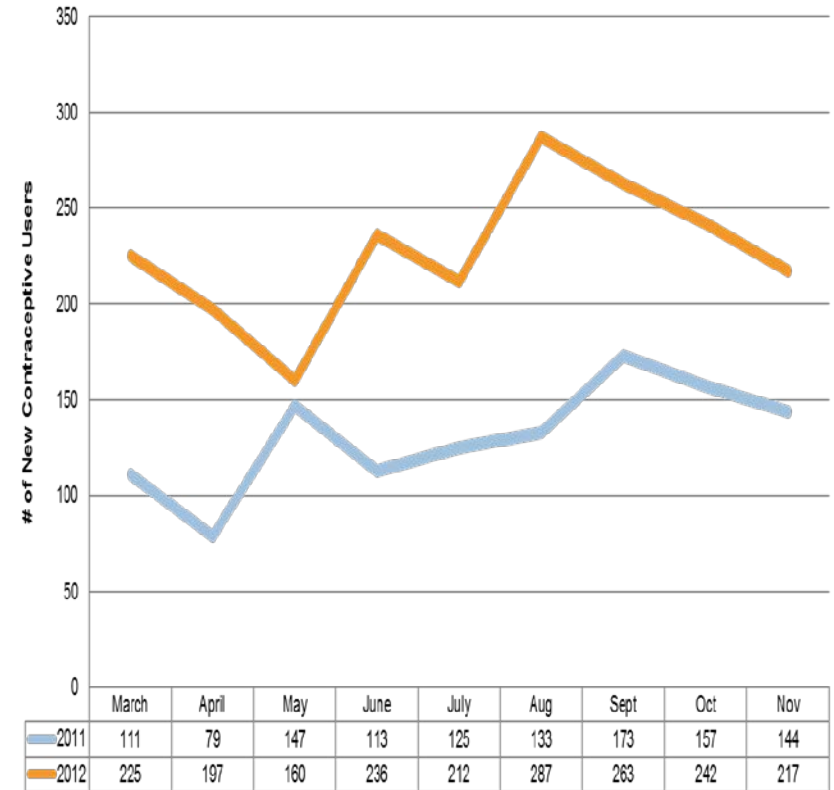
New Contraceptive Users

March-Nov 2011 v. 2012

LOFA



BONG



New Contraceptive Users

Comparing March-Nov 2011 versus March-Nov 2012, the # of new contraceptive users at participating facilities **increased**:

- 90% in Lofa County (517 to 983)
- 73% in Bong County (1182 to 2039)
- Total # new users in participating facilities =1323

Across participating facilities, % increase ranged from 23-389% in Bong and 15-197% in Lofa



Bong: Penta 1 and Penta 3 doses administered March-November 2011 and 2012

Immunization performance	% change from 2011 to 2012	
	Pilot facilities (N=5)	All other facilities (N=31)
Penta 1 doses	9% increase	10% increase
Penta 3 doses	5% increase	11% increase
Penta 1-3 Drop out rate	Increased from 6% to 9%	0% change (remained at 7%)



LOFA: Penta 1 and Penta 3 doses administered March-November 2011 and 2012

Immunization performance	% change from 2011 to 2012	
	Pilot facilities (N=5)	All other facilities (N=48)
Penta 1 doses	35% increase	11% decrease
Penta 3 doses	21% increase	6 % decrease
Penta 1-3 Drop out rates	Increase from 14 to 25%	Decrease from 8% to 3%



Key Takeaways

Factors that Impede Successful Integration

- Turnover of staff without a plan for orienting new staff
- Unreliable supplies of key commodities
- Awkward physical layouts/pathways from the EPI to the FP areas
- Lack of PPFP counseling skills among midwives (CMs)

Recommendations

- M&E Must have equal emphasis on FP and EPI
- CMs must be trained in EPI and FP (PPFP)
- Ensure appropriate BCC messages and actions



Thank you!

